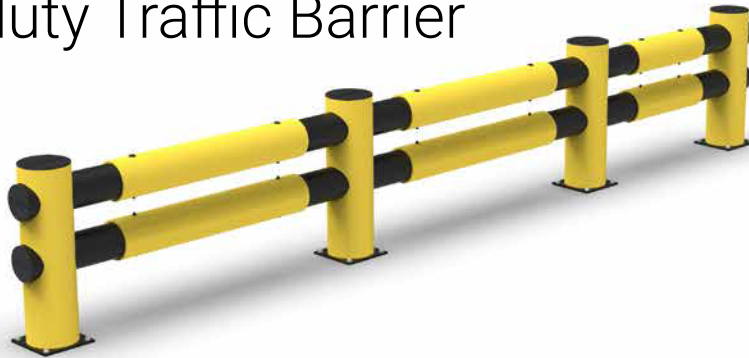




# HOTEL

## Heavy duty Traffic Barrier



Tested Impact Energy  
according to TÜV

**102.700 Joule**

At 22.5° Impact, 3.0 km/h (1,86 mph)  
and 11.590 kg (25551 lbs) on  
a C20/25 concrete floor and  
max. force to bolt at 21 kN.

### Description

HOTEL Traffic Barrier is designed for the most demanding and heavy-duty applications, offering superior protection and traffic control in high-impact environments. Compared to the d-flexx CHARLIE model, the HOTEL barrier is specifically engineered for environments requiring greater durability and resilience, making it the ideal solution for areas with high vehicle traffic and potential collision risks. The d-flexx Hotel Traffic Barrier is perfect for heavy-duty applications in industrial settings, logistics centres, and areas with frequent and intense vehicle traffic. Its robust design ensures reliable performance, even under the most strenuous conditions.

### Key Features

**Heavy-Duty Performance:** The d-flexx Hotel Traffic Barrier is built to handle higher impact forces and withstand continuous use, making it a more robust option than the d-flexx CHARLIE model. It is specially designed for environments where enhanced durability and safety are critical.

**Compliance with Standards:** TÜV certified and fully compliant with PAS13, which sets the benchmark for vehicle barriers by ensuring they can absorb impact and protect structures and pedestrians effectively. This makes the Hotel barrier ideal for high-risk zones requiring the utmost in safety.

**Durable Construction:** Engineered to endure harsh conditions, including frequent impacts. Its long-lasting durability makes it an essential asset in high-traffic zones.

### Technical Information

Operational Temperature Range:	-40°C up to +50°C / -40°F up to +112°F
Ignition Temperature:	350-360°C / 662 - 680°F
Flash Point:	350-360°C / 662 - 680°F
Toxicity:	Nontoxic
Chemical Resistance:	High-ISO / TR 10358
UV Stability	Gray scale: 5/5
Changes to material after 5 years:	Blue Wool scale: 8/8 Tensile strength: No changes
Static Rating (surface resistivity):	1015-1016 Ω
Standard Warranty:	5 Years
Fixations:	Concrete screw, Zinc coated, Size Ø12x80 mm
Deflection zone:	250mm / 9,84in

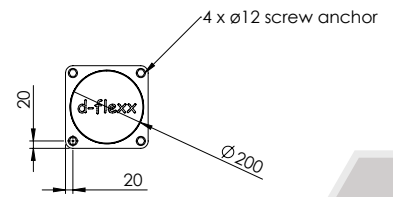
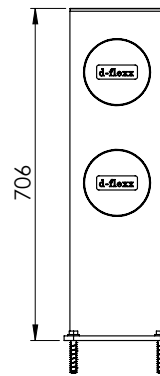
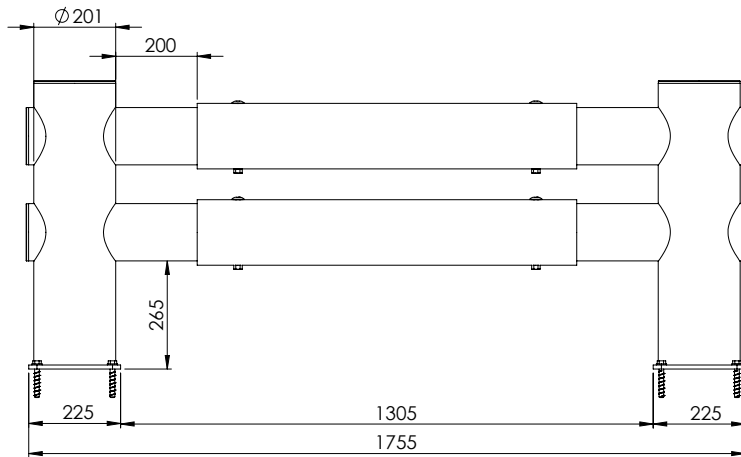
### Scan or click to review



Maintenance Guide  
Assembly Guide  
Videos  
Tender Text  
Warranty



## Specifications

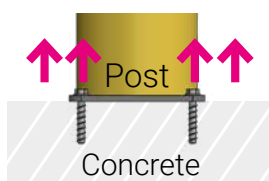


## Measurements mm vs in

	mm	in
Diameter	200	7,87
Height	706	27,80
Space	265	10,43
Width 1	200	7,87
Width 2	1305	51,38
Width 3	1755	69,09
Footplate	225	8,86
Pos. drill holes	20	0,79



## Max. force to bolt 21 kN



## Impact Test HOTEL

Mid Rail Max. Energy (Joules)	90°	67,5°	45°	22,5°
	15.000	17.600	30.000	102.700

End post max. energy (Joules) - 90° 4.000

Mid post max. energy (Joules) - 90° 4.000